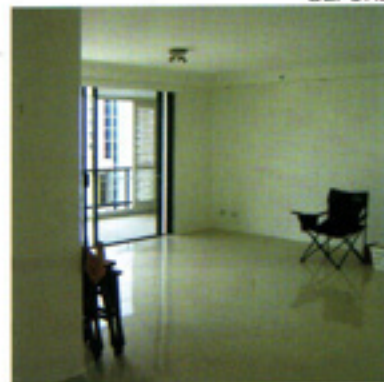


BEFORE



Describe the project when you started it.

The project was an empty shell in a multi-storey building. I had worked with the clients on previous occasions and they were very happy with the results. The unit has spectacular views of the ocean, a large living and dining room with two bedrooms and two bathrooms. One of my senior interior designers, Renee Burgess assisted me on this project.



What was the biggest advantage of the space you had to work with?

The greatest advantage was the openness of the living, dining, kitchen and alfresco entertaining areas which had the added advantage of the spectacular views of the ocean and marina. The large wall at the rear of the living and dining areas allowed us to create a stunning wallpaper feature within the space. The other advantage was that we had no real limitations or restraints as designers, working on a blank canvas.



What was your clients' brief to you?

The brief was to create a relaxing holiday atmosphere. They wanted me to adapt a classical look to their modern unit. Our main objective was to fully furnish and accessorise the unit throughout in a contemporary style with a traditional twist. The traditional element was translated through several soft furnishings, selected feature furniture pieces and accessories.

What was the biggest disadvantage of the space you had to work with?

The only disadvantage we experienced on this project or any high rise unit for that matter, is working within the scale of the unit as opposed to a house. This means the furniture pieces must be of an appropriate proportion, not only for the scale of the unit but most importantly, the size restriction of the lift as a means of access.



List the finishes and colours used.

The lighter coloured surfaces such as the existing floor tile and the new calcutta marble dining table provided contrast to the dark charcoal painted and wenge stained furniture that we supplied.

The feature wallpaper by Designers Guild in the living/dining area was a fresh lime and aqua floral design with a hint of gold metallic detail. The colours in the wallpaper are reflected throughout the soft furnishings and accessories.

We chose a range of velvet and chenille textured fabrics from various suppliers that provided interest and vibrant colour throughout. The custom designed 100% wool rug in the living room was another textural element within the space. We used a traditional damask pattern but exploded the design and applied aqua, lime and beige to create a contemporary feel and colour combination.

JOHN CROFT DESIGN
07 3257 0633
jcd@croftdesign.com.au